

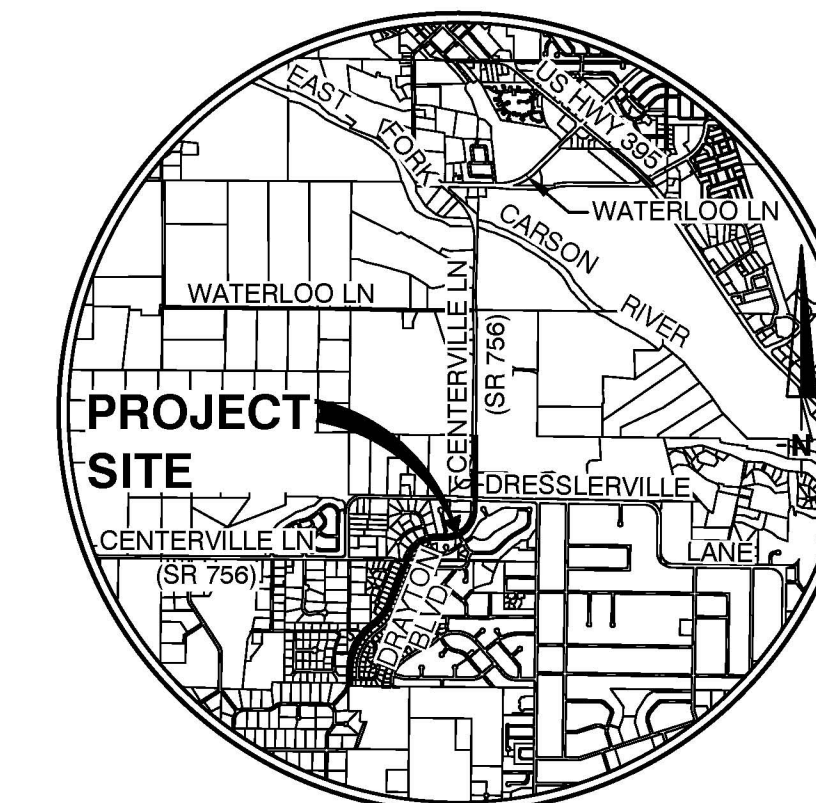
BASIS OF BEARINGS

THE BASIS OF BEARINGS FOR THIS SURVEY IS BASED ON THE NEVADA STATE PLANE COORDINATE SYSTEM, WEST ZONE NAD 83/2011 SCALED TO GROUND AROUND 0.00M, 0.00E BY THE COMBINED SCALE FACTOR OF 1.0002 AS MEASURED FROM RESOURCE CONCEPTS, INC.(RCI) CONTROL POINT 1.

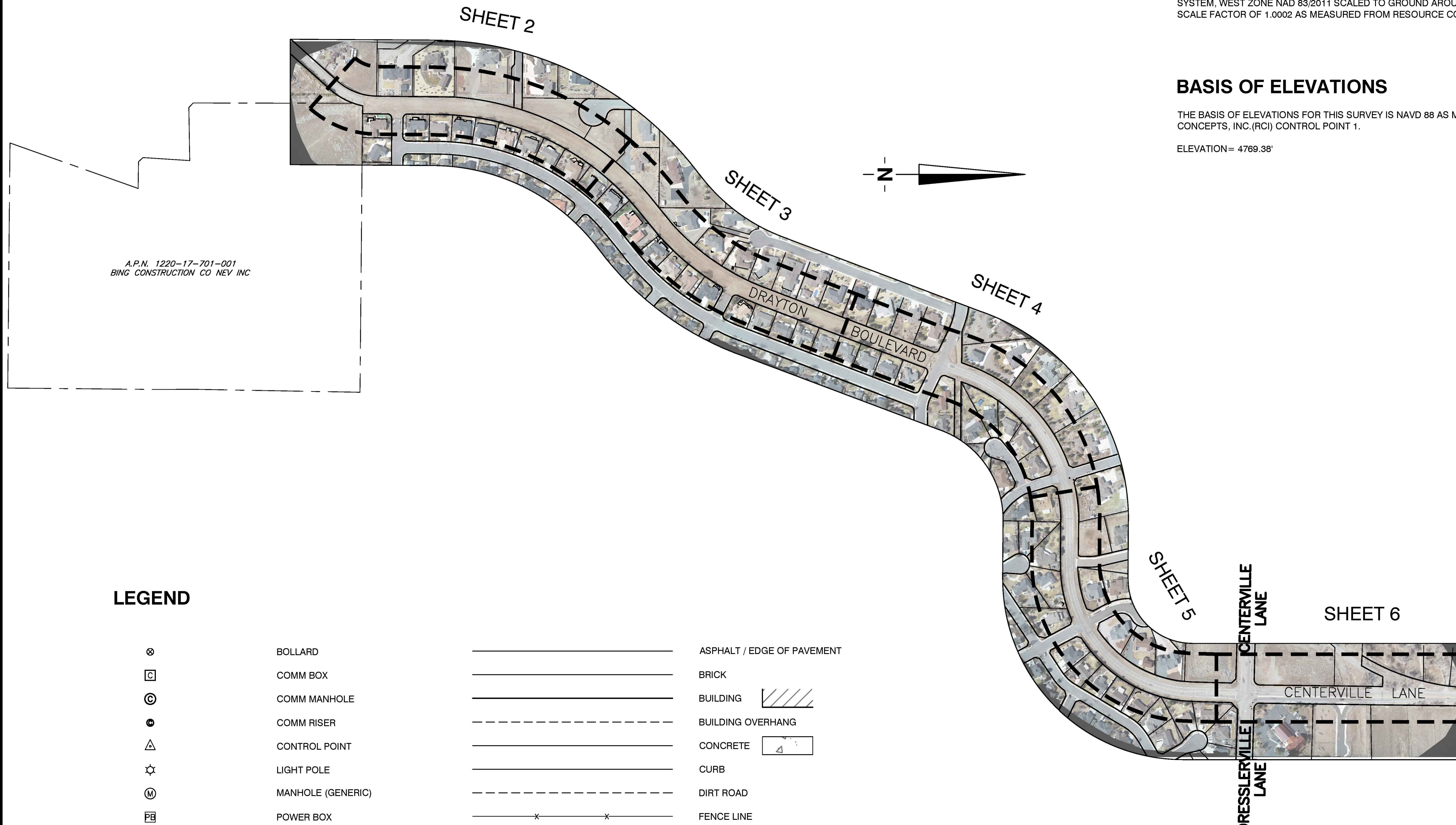
BASIS OF ELEVATIONS

THE BASIS OF ELEVATIONS FOR THIS SURVEY IS NAVD 88 AS MEASURED FROM RESOURCE CONCEPTS, INC.(RCI) CONTROL POINT 1.

ELEVATION = 4789.38'



VICINITY MAP
NO SCALE



A.P.N. 1220-17-701-001
BING CONSTRUCTION CO NEV INC

LEGEND

⊗	BOLLARD	———	ASPHALT / EDGE OF PAVEMENT
⊠	COMM BOX	———	BRICK
⊙	COMM MANHOLE	———	BUILDING
⊙	COMM RISER	———	BUILDING OVERHANG
△	CONTROL POINT	———	CONCRETE
☆	LIGHT POLE	———	CURB
⊙	MANHOLE (GENERIC)	———	DIRT ROAD
⊠	POWER BOX	———	FENCE LINE
←	GUY ANCHOR	———	FLOWLINE
⊙	POWER MANHOLE	———	GRAVEL ROAD
⊙	POWER RISER / METER	———	LIP
⊠	SIGNAL BOX	———	MAJOR CONTOUR LINE
⊙	UTILITY POLE	———	MINOR CONTOUR LINE
⊙	STORM DRAIN MANHOLE	———	OVERHEAD POWER LINE
⊙	SIGN	———	RIPRAP
⊙	SANITARY SEWER MANHOLE	———	SHRUB
⊙	UTILITY MANHOLE	———	WALK
⊙	UTILITY BOX	———	
⊙	UTILITY RISER	———	
⊙	FIRE DEPARTMENT CONNECTION	———	
⊙	FIRE HYDRANT	———	
⊙	IRRIGATION CONTROL BOX	———	
⊙	WATER MANHOLE	———	
⊙	WATER METER	———	
⊙	WATER VALVE	———	

SURVEYOR'S NOTES

1. THE TOPOGRAPHIC INFORMATION SHOWN HEREON IS BASED ON AN AERIAL SURVEY PERFORMED BY RESOURCE CONCEPTS INC. ON MARCH 28, 2023 AT THE INSTANCE OF DOUGLAS COUNTY.
2. NO TITLE REPORT WAS PROVIDED FOR THIS SURVEY.
3. EASEMENTS MAY EXIST THAT ARE NOT SHOWN HEREON.
4. ANY UTILITY LOCATIONS SHOWN HEREON ARE BASED ON VISIBLE SURFACE EVIDENCE FROM THE ORTHORECTIFIED IMAGERY DERIVED FROM THE AERIAL SURVEY PERFORMED BY RESOURCE CONCEPTS INC. A UTILITY LOCATE SERVICE SHOULD BE USED PRIOR TO ANY POT-HOLING OR EXCAVATION TO DETERMINE THE LOCATIONS OF ANY EXISTING SUBSURFACE UTILITIES.
5. NOT ALL STORM DRAIN CROSSINGS SHOWN ARE SIZED. A SUPPLEMENTAL SURVEY WILL BE REQUIRED TO VERIFY SIZE AND DIRECTION.
6. RIGHT-OF-WAYS AND PROPERTY LINES ARE APPROXIMATE, FOR GRAPHICAL REPRESENTATION ONLY. A SUPPLEMENTAL SURVEY WILL BE REQUIRED TO DETERMINE RIGHT-OF-WAYS AND BOUNDARY LINES.
7. SUPPLEMENTAL FIELD SURVEY WILL BE REQUIRED FOR UTILITY IDENTIFICATION AND VERIFICATION.

PROJECT CONTROL

POINT	NORTHING	EASTING	ELEVATION	DESCRIPTION
1	14651874.96	2295983.78	4769.38	SET MAG NAIL
6	14644466.96	2294047.77	4779.69	SET 5/8" REBAR & RCI CAP
7	14644339.56	2294126.22	4782.40	SET 5/8" REBAR & RCI CAP
111	14644909.97	2294109.38	4773.51	SET MAG NAIL
113	14644933.92	2294043.54	4773.50	SET MAG NAIL
114	14644172.63	2294059.99	4781.96	SET MAG NAIL
115	14643656.19	2293730.11	4786.14	SET MAG NAIL
116	14643604.95	2293776.57	4786.35	SET MAG NAIL
117	14643563.02	2293064.53	4787.90	SET MAG NAIL
118	14642962.93	2292639.40	4786.26	SET MAG NAIL
119	14643036.80	2292562.08	4785.93	SET MAG NAIL
120	14642052.414	2292296.24	4789.78	SET MAG NAIL
121	14640586.29	2291523.75	4791.45	SET MAG NAIL
122	14640400.49	2291413.39	4791.49	SET MAG NAIL
123	14641454.96	2291602.07	4789.56	SET MAG NAIL
129	14644789.96	2294120.88	4774.78	SET MAG NAIL



04-10-2023

REVISION	DATE



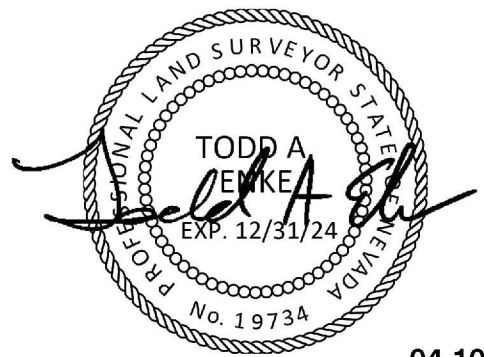
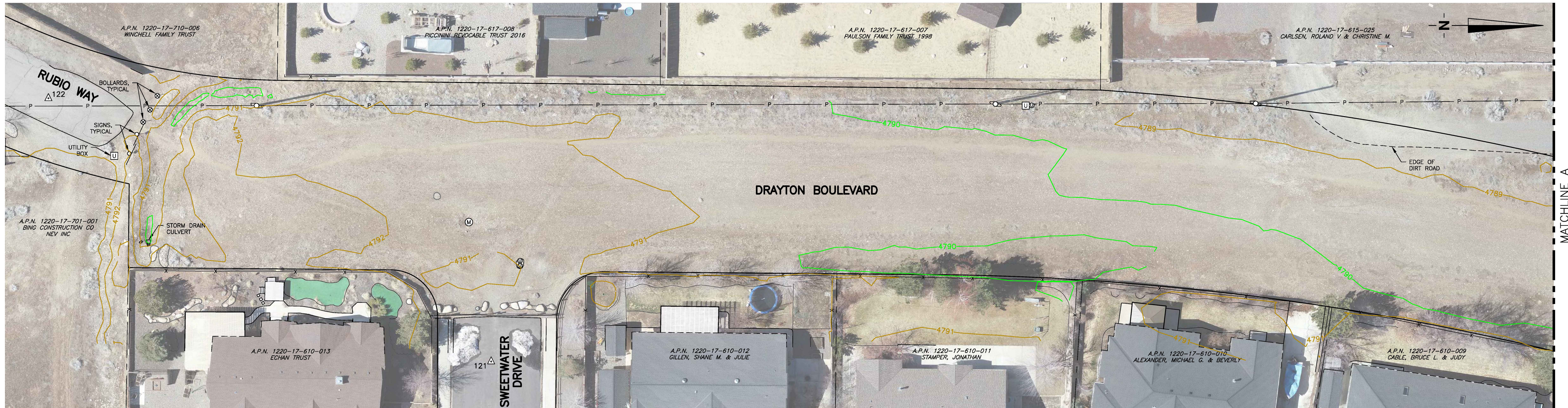
**DOUGLAS COUNTY
COMMUNITY DEVELOPMENT**

**DOUGLAS COUNTY
RANCHOS MULTIMODAL
TRAIL PROJECT**

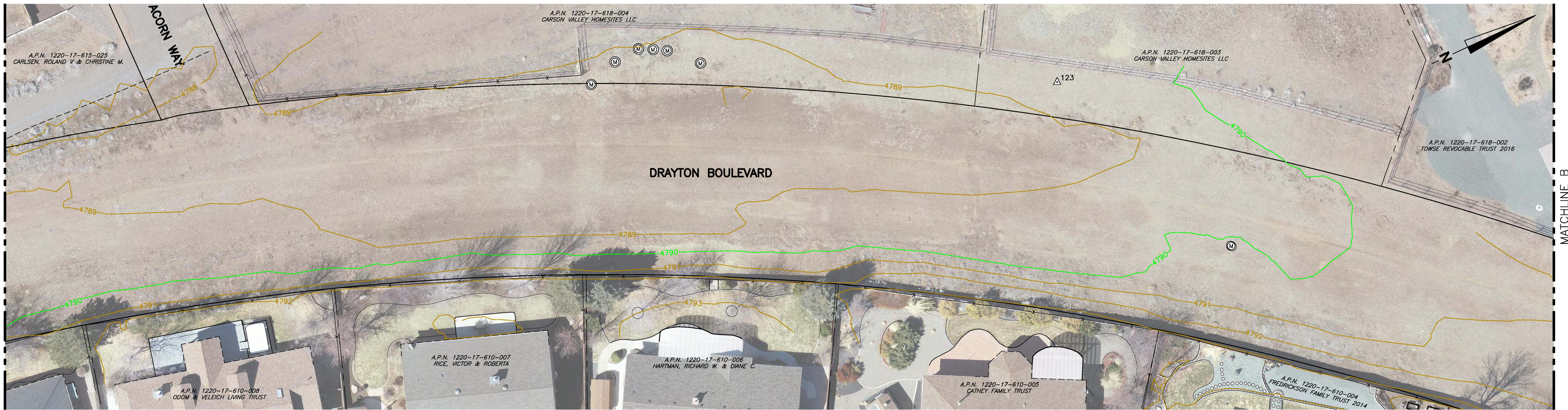


**Engineering • Surveying • Water Rights
Resources • Environmental • Services**
www.rci-nv.com
Carson City 340 N. Minnesota St., Carson City, NV 89703-4152 775-883-1600
Lake Tahoe 276 Kingsbury Grads. Ste. 206 Stateline, NV 89449 775-588-7500

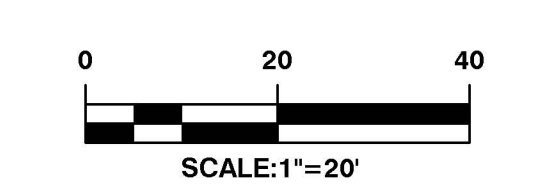
JOB NO.:	22-167
DATE:	04-10-2023
DESIGNED:	
DRAWN:	JS
CHECKED:	TAE
SHEET 1 OF 6	



04-10-2023

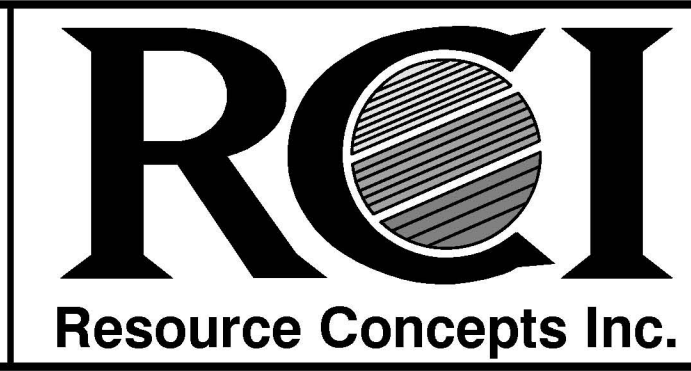


REVISION	DATE



**DOUGLAS COUNTY
COMMUNITY DEVELOPMENT**

**DOUGLAS COUNTY
RANCHOS MULTIMODAL
TRAIL PROJECT**



**Engineering • Surveying • Water Rights
Resources • Environmental • Services**

www.rci-nv.com

Carson City
340 N. Minnesota St., Carson
City, NV 89703-4152
775-883-1600

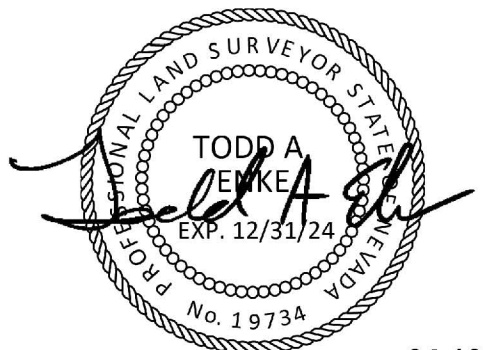
Lake Tahoe
276 Kingsbury Grade, Ste. 206
Stateline, NV 89449
775-588-7500

JOB NO.:	22-167
DATE:	04-10-2023
DESIGNED:	
DRAWN:	JS
CHECKED:	TAE
SHEET 2 OF 6	

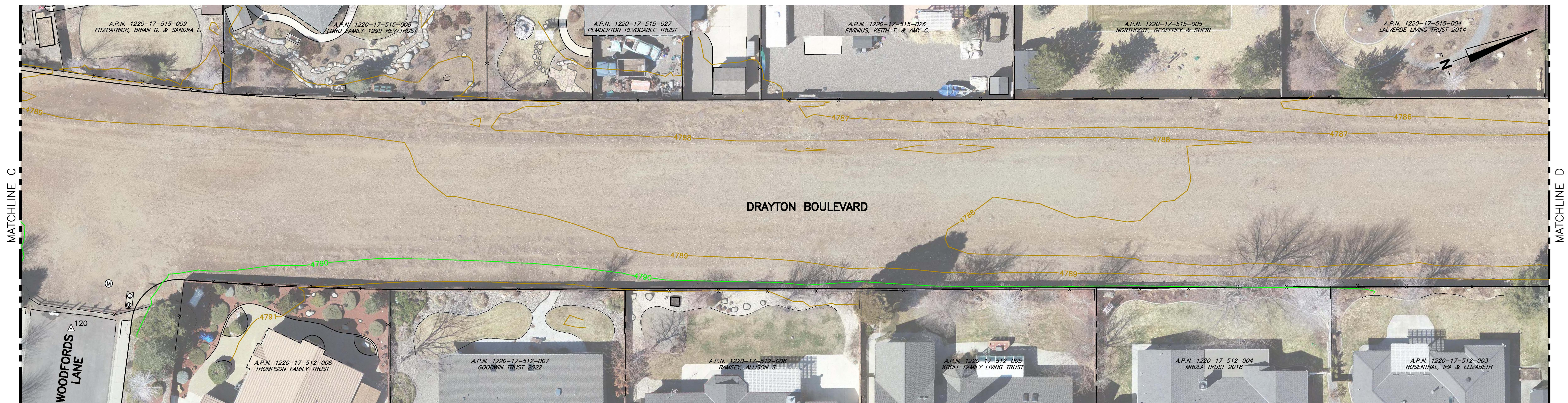


MATCHLINE B

MATCHLINE C



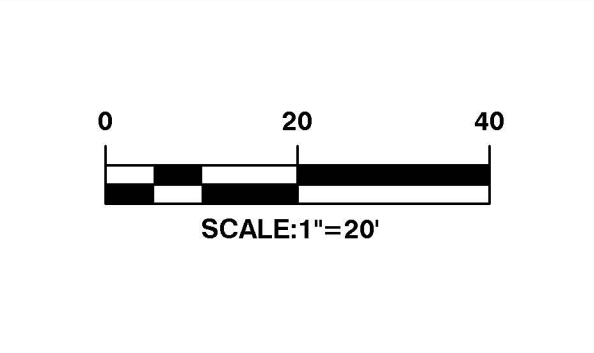
04-10-2023



MATCHLINE C

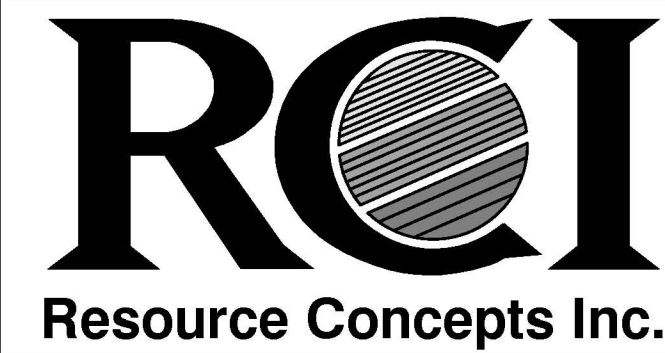
MATCHLINE D

REVISION	DATE



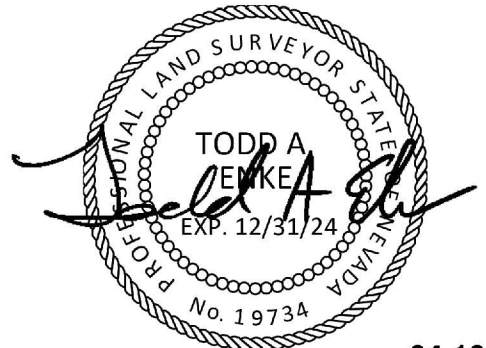
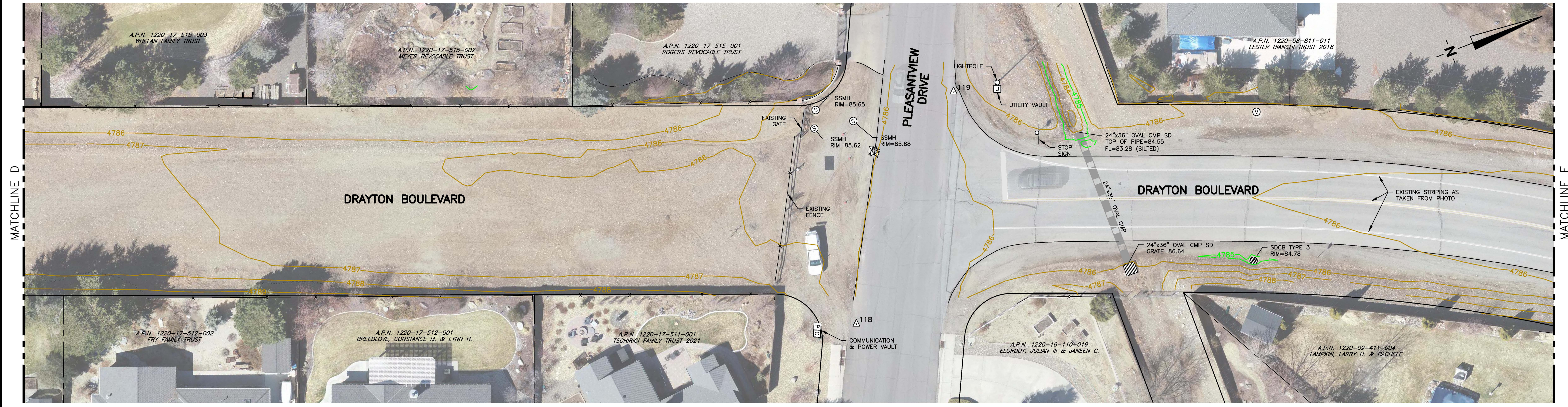
**DOUGLAS COUNTY
COMMUNITY DEVELOPMENT**

**DOUGLAS COUNTY
RANCHOS MULTIMODAL
TRAIL PROJECT**

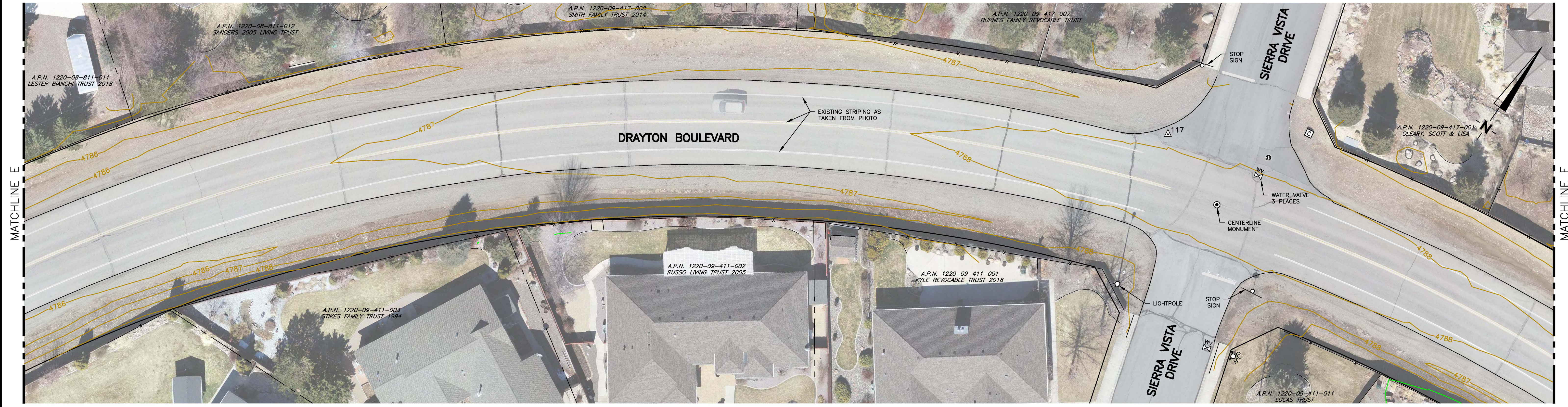


**Engineering • Surveying • Water Rights
Resources • Environmental • Services**
www.rci-nv.com
Carson City 340 N. Minnesota St., Carson City, NV 89703-4152 775-883-1600
Lake Tahoe 276 Kingsbury Grads. Ste. 206 Stateline, NV 89449 775-588-7500

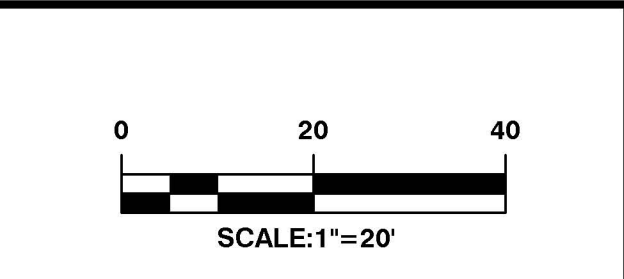
JOB NO.:	22-167
DATE:	04-10-2023
DESIGNED:	
DRAWN:	JS
CHECKED:	TAE
SHEET 3 OF 6	



04-10-2023

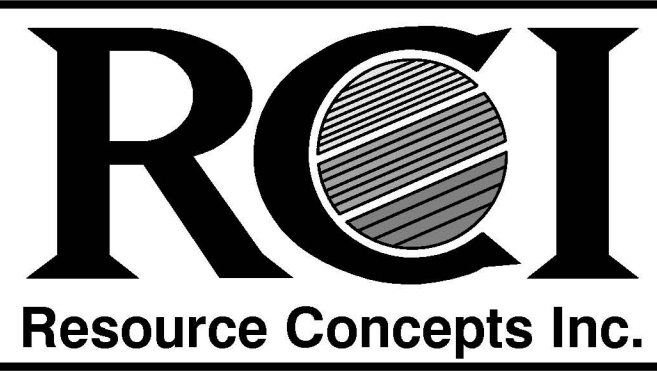


REVISION	DATE



**DOUGLAS COUNTY
COMMUNITY DEVELOPMENT**

**DOUGLAS COUNTY
RANCHOS MULTIMODAL
TRAIL PROJECT**



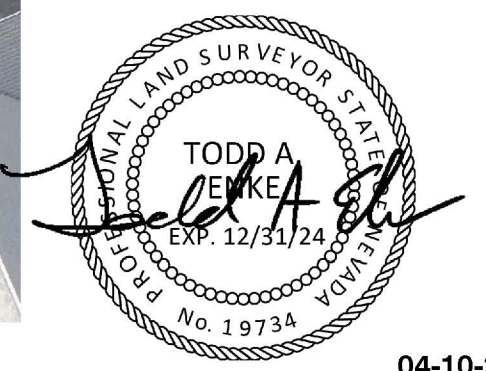
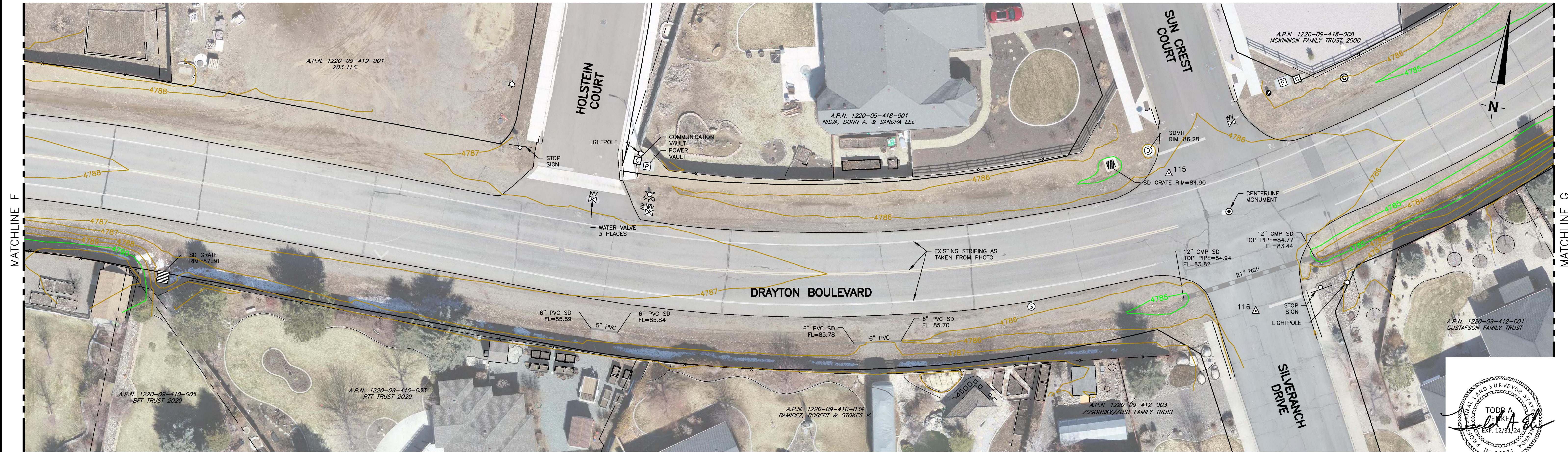
**Engineering • Surveying • Water Rights
Resources • Environmental • Services**

www.rci-nv.com

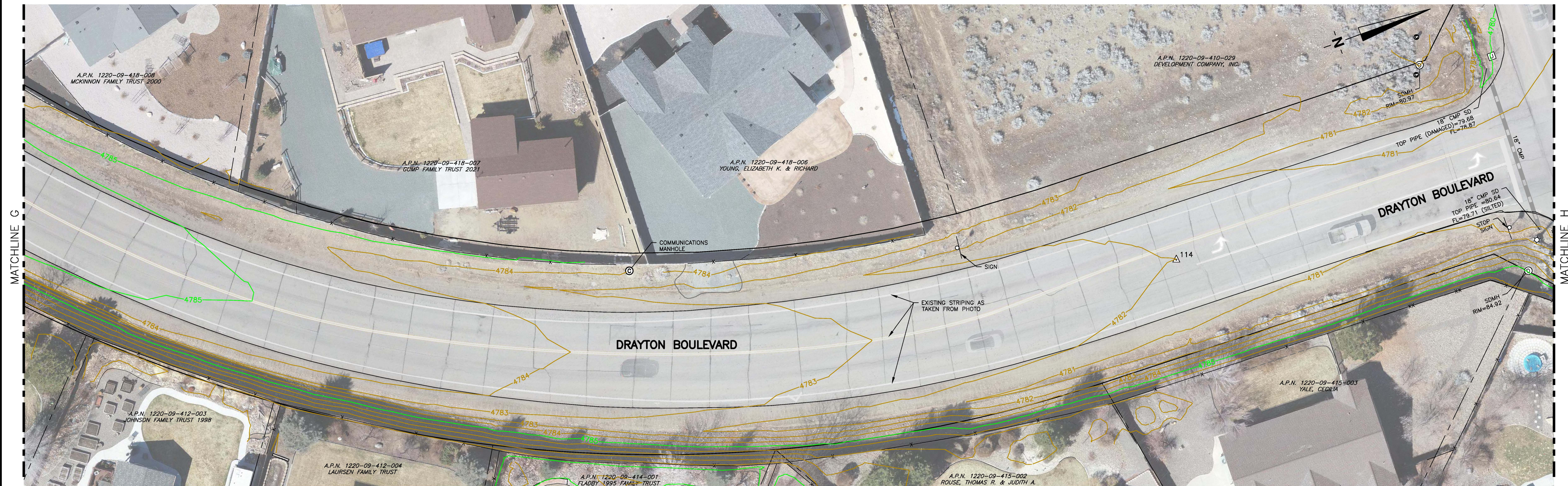
Carson City
340 N. Minnesota St., Carson
City, NV 89703-4152
775-883-1600

Lake Tahoe
276 Kingsbury Grade, Ste. 206
Stateline, NV 89449
775-588-7500

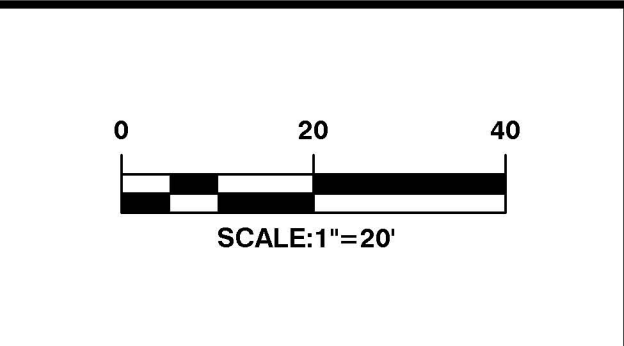
JOB NO.:	22-167
DATE:	04-10-2023
DESIGNED:	JS
DRAWN:	TAE
CHECKED:	TAE
SHEET 4 OF 6	



04-10-2023



REVISION	DATE



**DOUGLAS COUNTY
COMMUNITY DEVELOPMENT**

**DOUGLAS COUNTY
RANCHOS MULTIMODAL
TRAIL PROJECT**



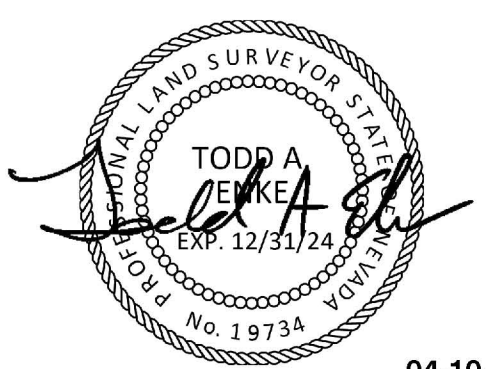
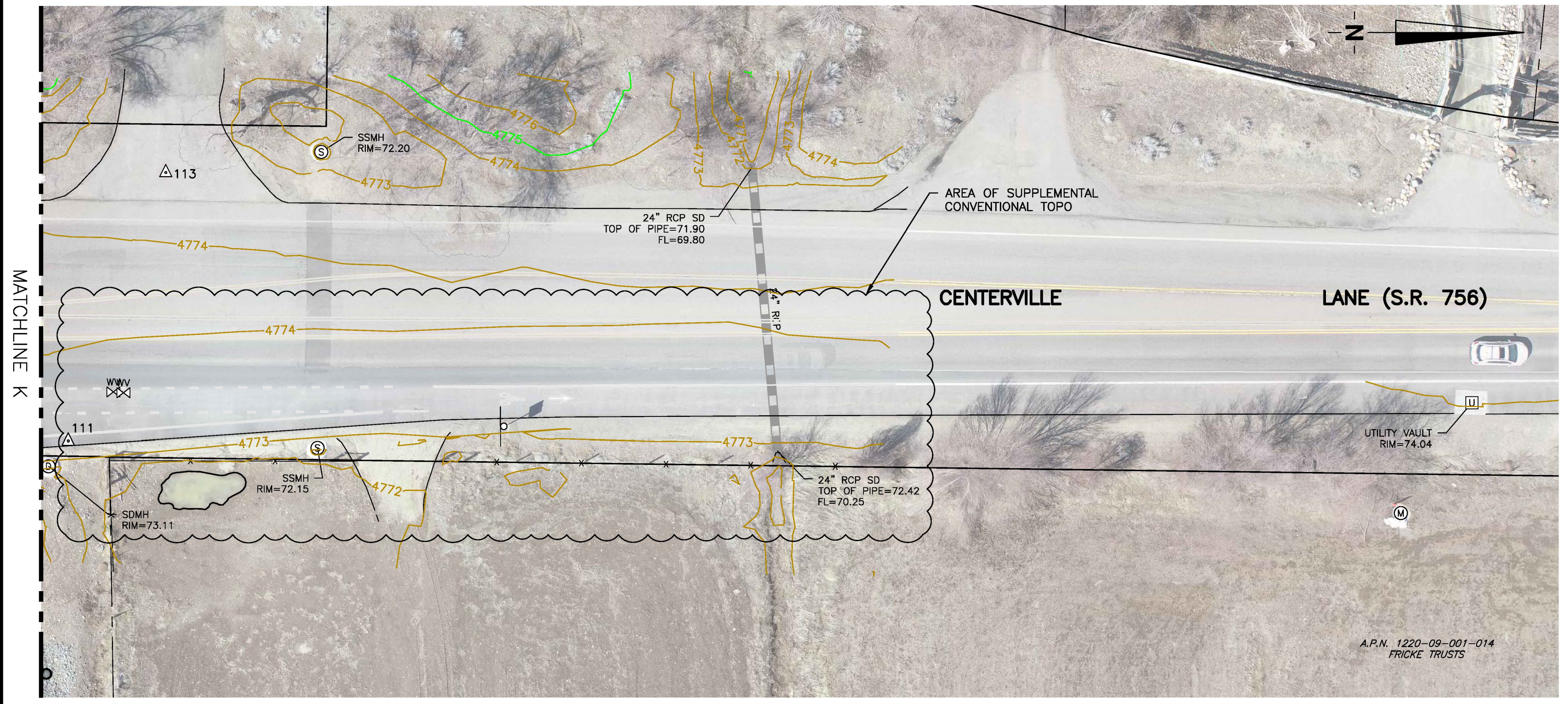
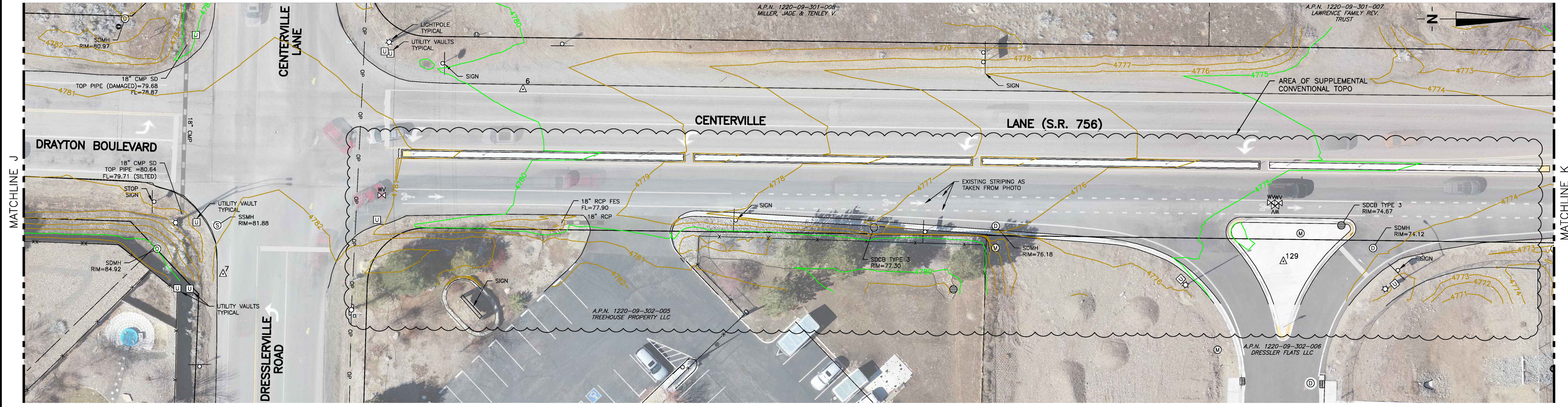
**Engineering • Surveying • Water Rights
Resources • Environmental • Services**

Carson City 340 N. Minnesota St. Carson City, NV 89703-4152 775-883-1600

www.rci-nv.com

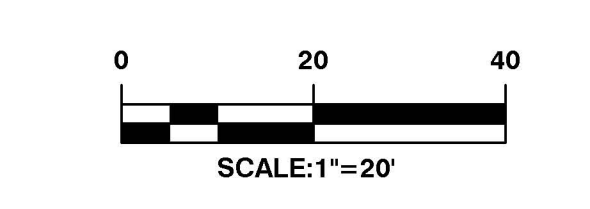
Lake Tahoe 276 Kingsbury Grade, Ste. 206 Stateline, NV 89449 775-588-7500

JOB NO.:	22-167
DATE:	04-10-2023
DESIGNED:	JS
DRAWN:	TAE
CHECKED:	TAE
SHEET 5 OF 6	



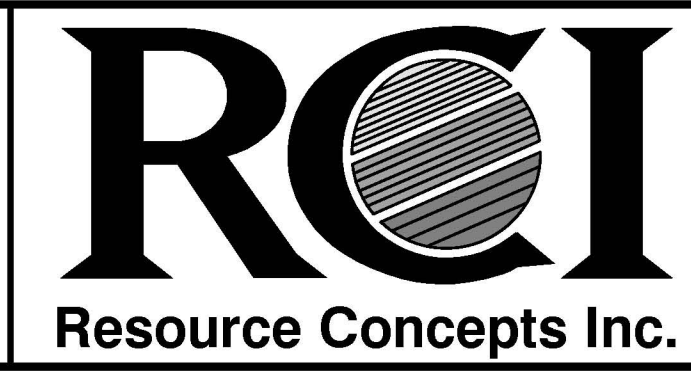
04-10-2023

REVISION	DATE



**DOUGLAS COUNTY
COMMUNITY DEVELOPMENT**

**DOUGLAS COUNTY
RANCHOS MULTIMODAL
TRAIL PROJECT**



**Engineering • Surveying • Water Rights
Resources • Environmental • Services**

www.rci-nv.com

Carson City 775-883-1600
276 Kingsbury Grade, Ste. 206
Stateline, NV 89449 775-588-7500

JOB NO.:	22-167
DATE:	04-10-2023
DESIGNED:	
DRAWN:	JS
CHECKED:	TAE
SHEET 6 OF 6	